

Electrolux

ELECTROLUX HOME PRODUCTS PTY LTD

ABN 51 004 762 341

Technical Publication N° CG1061

Issue: 1

Date: 4/17

SIMPSON

GAS COOKTOPS

MODEL

SHG956SB

PNC

943254017

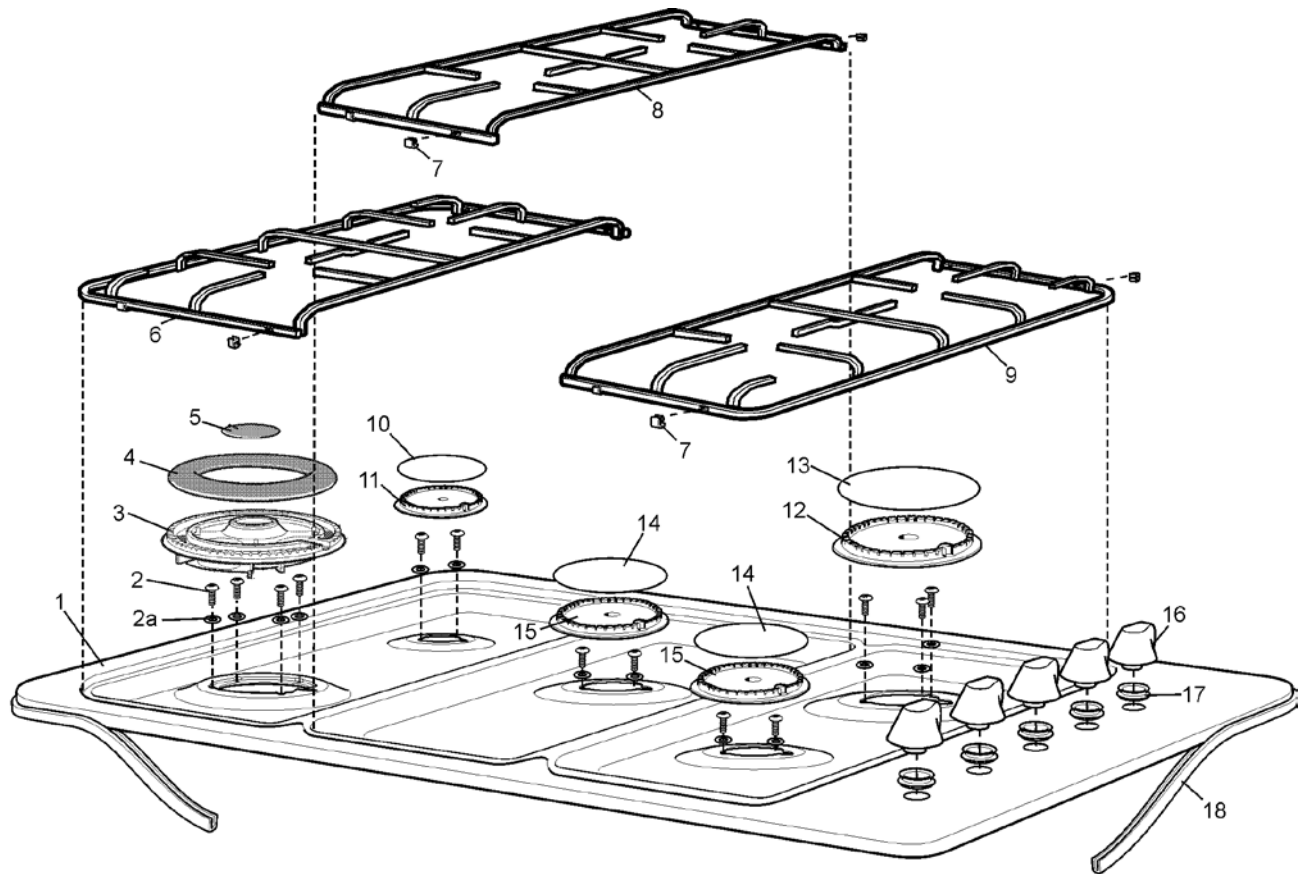
First Built Dates	
SHG956SB	5/17

Contents

First Built Dates.....	2
Contents.....	3
COOKTOP ASSEMBLY	4
COOKTOP ASSEMBLY	6
Gas Conversion – Important	8
CIRCUIT DIAGRAM.....	10

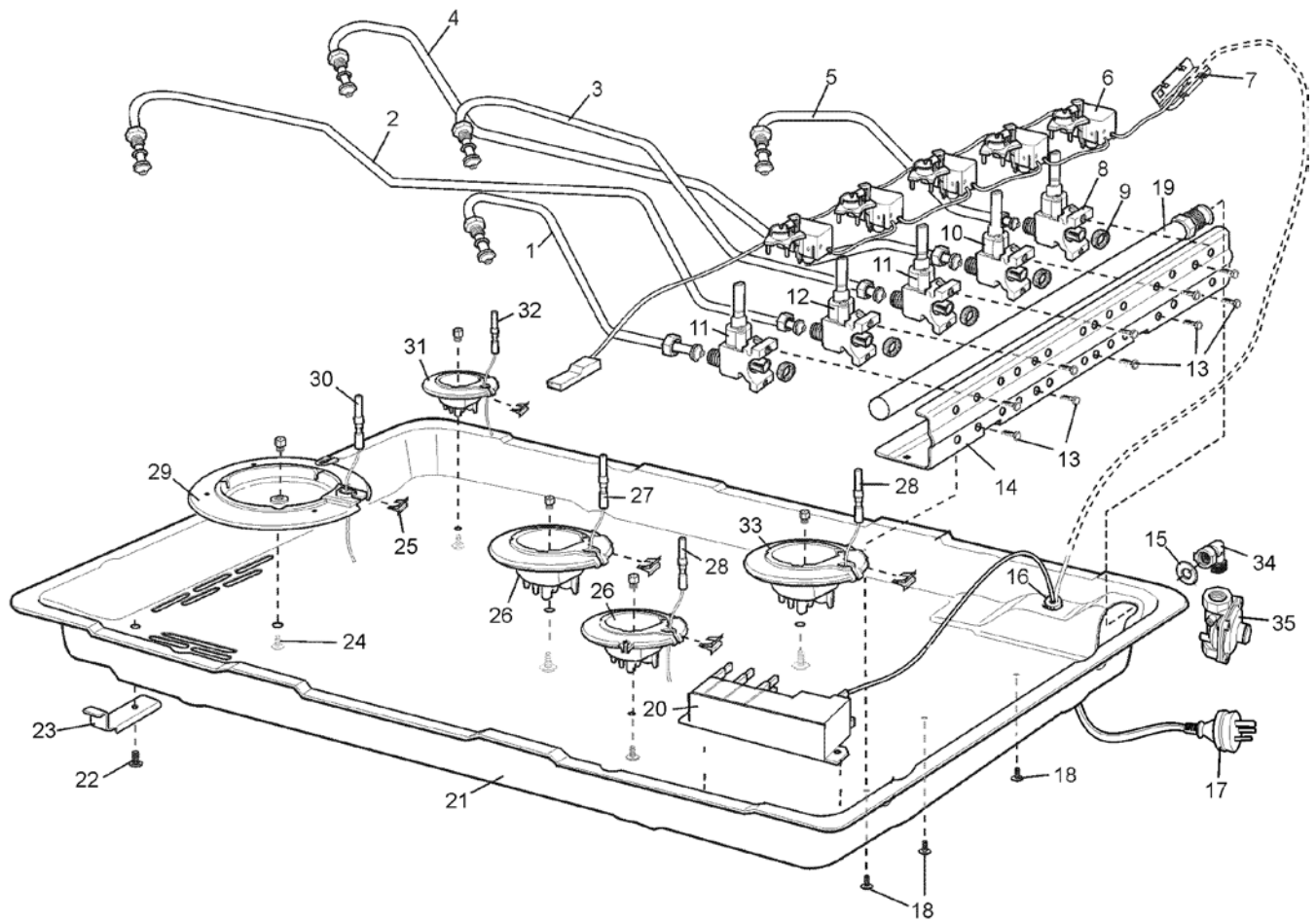
NOTE: In Parts Listings

N.I.	=	Not Illustrated
N.P.A.	=	No Part Available
N.P.N.	=	Not Used on this Model



ITEM	PART N°	DESCRIPTION Ex 8293	QTY
1	A04657517	HOB 900 TOP PLATE S/S SCREENED	1
2	354 3203 01	SCREW 2.9 X 13 PAN T10 ZP	12
3	357725915	TRIPLE CROWN WOK BNR CYL MACH	1
4	389051402	WOK OUTER GLOSS	1
5	389051302	WOK INNER GLOSS	1
6	A04028802	TRIVET WIRE WOK 90 CHEF MATT	1
7	305435300	FOOT TRIVET	12
8	A04028902	TRIVET WIRE CENT 90 CHEF MATT	1
9	A04028702	TRIVET WIRE STD 90 CHEF MATT	1
10	354013906	BURNER CAP ENAM AUX CYLINDER	1
11	354013802	BURNER CROWN AUX CYLINDER	1
12	354013606	BURNER CROWN RAPID CYLINDER	1
13	354013904	BURNER CAP ENAM RAPID CYLINDER	1
14	354013905	BURNER CAP ENAM SEMI-R CYLIND	2
15	354013707	BURNER SEMIRAPID BUNER	2
16	A02633010	KNOB SILVER	5
17	A06467501	GROMMET	5
18	305 5221 01	SEAL SURROUND 2800MM	1

EX. VIEW DRAWING 8294
COOKTOP ASSEMBLY



ITEM	PART N°	DESCRIPTION EX 8294	QTY
1	A03852901	TUBE RF FSG FORTE COMMERCIAL	1
2	A03853301	TUBE LF FSG FORTE COMMERCIAL	1
3	A03853101	TUBE MID FSG FORTE COMMERCIAL	1
4	A03853201	TUBE LR FSG FORTE COMMERCIAL	1
5	A03853001	TUBE RR FSG FORTE COMMERCIAL	1
6	A01014008	SWITCH HARNESS 5PT	1
7	N.P.A.	COFFIN INSULATOR 140C NYLON	2
8	305448619	VALVE GAS BSI FSG WOK BLACK	1
9	0208 003 419	SEAL VALVE SOURDILLON	5
10	305448616	VALVE GAS BSI FSG AUX GREEN	1
11	305448617	VALVE GAS BSI FSG SEMI RAP BL	2
12	305448618	VALVE GAS BSI FSG RAPID RED	1
13	305 5175 00	SCREW M4 X 15 HEX ZC	10
14	305489101	BRACKET GAS RAIL 600/900 WELD	1
15	0115 009 011	WASHER SEALING	1
16	305 5322 00	GROMMET CORD GRIP MP6N4	1
17	A06100501	CABLE - ELECT SUPPLY (10 A)	1
18	305338604	SCREW M3.5X6	3
19	0011002591	RAIL GAS COOKTOP 5 HOLE GAIL	1
20	A02146801	IGN BOX 5PT 240V	1
21	N.P.A.	BURNER BOX GAIL WASHED HZ	1
22	305 3761 02	SCREW 3/4X8 PAN Z/P (LP HP AER	4
23	A00561202	CLAMP BURNER BOX CORAL/GAIL HZ	4
24	305 3096 05	SCREW PAN HEAD M4 X 8	5
25	A03381701	SPRING ELECTRODE	5
26	A04856301	BURNER BODY ASSY S/RAP IGN NG	2
27	A01330609	PLUG SPARK 600 MM ENAMELLED	1
28	A01330606	PLUG SPARK 400 MM ENAMELLED	2
29	A04856505	BURNER BODY ASSY WOK IGN NG	1
30	A01329109	PLUG SPARK WOK 900MM ENAMELLED	1
31	A04856101	BURNER BODY ASSY AUX IGN NG	1
32	A01330612	PLUG SPARK 900 MM ENAMELLED	1
33	A04856401	BURNER BODY ASSY RAP IGN NG	1
34	A06178801	FITTING GAS INLET TAPERED BSPT	1
35	A00338701	REGULATOR GAS NG INTEG TEST PT	1
N.I.	0065 009 254	NUT METRIC M12 X 1.00	3
N.I.	305597600	THERMOCOUPLE 275MM	2
N.I.	305597601	THERMOCOUPLE 500MM	1
N.I.	305597602	THERMOCOUPLE 750MM	1
N.I.	305597701	THERMOCOUPLE 750MM WOK	1

LPG CONVERSION

This appliance is supplied set up for Natural Gas usage. A conversion kit is included with the product for Universal LPG usage. The conversion kit contains the appropriate injectors and 1 LPG sticker.

Please follow the procedure below if a conversion to suit UNIVERSAL LPG is required:

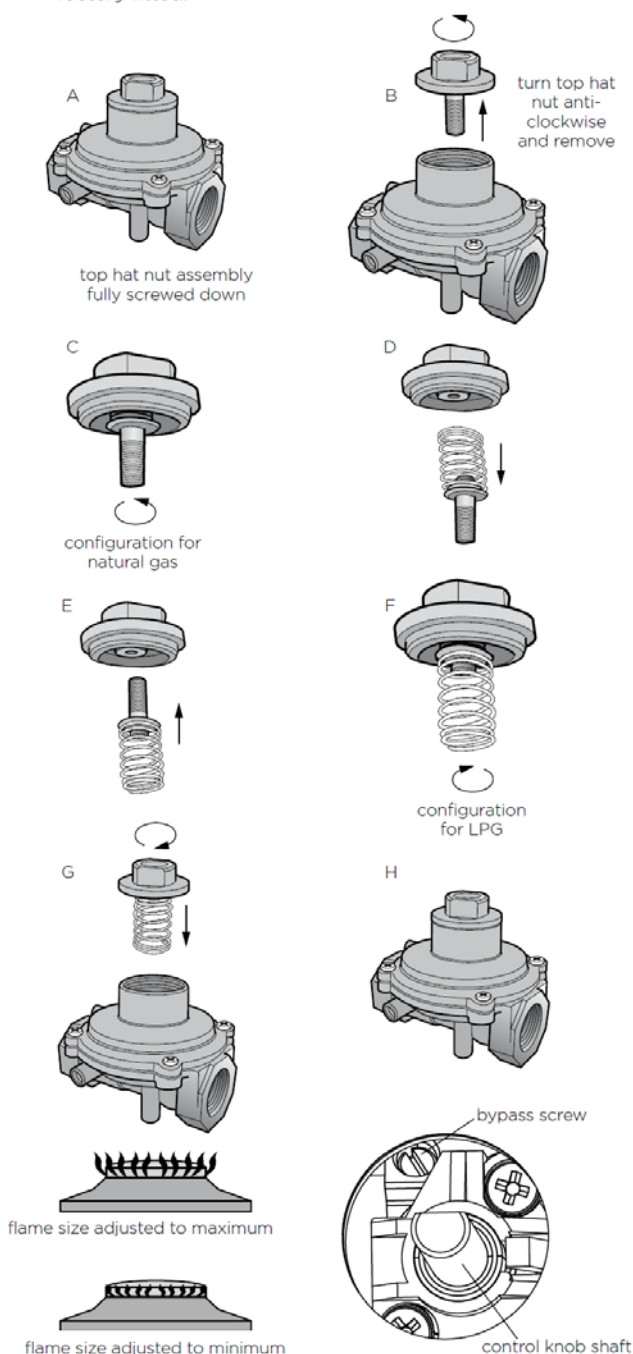
1. Remove the hotplate trivets, burner caps and burner crowns to access the hotplate injectors. Replace the factory fitted injectors with the appropriate injectors, as supplied. Refer to injector orifice table for injector sizes. The injector size is stamped on the side of the injector.
2. Unscrew the top hat nut from the regulator. The top hat nut and control pressure spring assembly will disengage as an assembly.
3. Unscrew the threaded pin from top hat.
4. Upright threaded pin, so spring is free and screw pin back into the top hat until firm.
5. Refit the top hat nut assembly to the regulator ensuring that it is fully screwed down. The regulator is now set for connection to LPG.
6. Turn on the gas supply and at each new connection check for leaks using soapy water. Each hotplate valve should be turned on, one at a time, and the injector hole blanked off for several seconds.
7. The operation of the regulator can be confirmed by connecting a manometer to the pressure test point located on the side of the regulator body adjacent to the outlet. With the appliance operating check the outlet pressure:
 - when all burners of the appliance are operating at maximum,
 - when the smallest burner of the appliance is operating at minimum.

Under these conditions the outlet pressure should not vary from the nominal outlet pressure of 2.60kPa by more than $\pm 0.52\text{kPa}$.

8. If the regulator appears to not be performing satisfactorily then check the following points:
 - If the outlet pressure is consistently too low then the inlet pressure may be too low and adjustment of an upstream regulator or valve with insufficient flow capacity may be present in the gas supply line.
 - If this is suspected then it may be necessary to repeat the checks whilst measuring both the inlet and outlet pressure to determine if the inlet pressure is in the range 2.75 – 7.00kPa.
 - Check that the insert has been fitted correctly.
 - Check that the turret screw is fully screwed down.
 - Check that the regulator has been fitted to the gas supply line in the correct orientation, the arrow on the base of the body indicates the direction of gas flow.

Once these checks have been completed, if the regulator still fails to perform in a satisfactory manner it should be replaced.

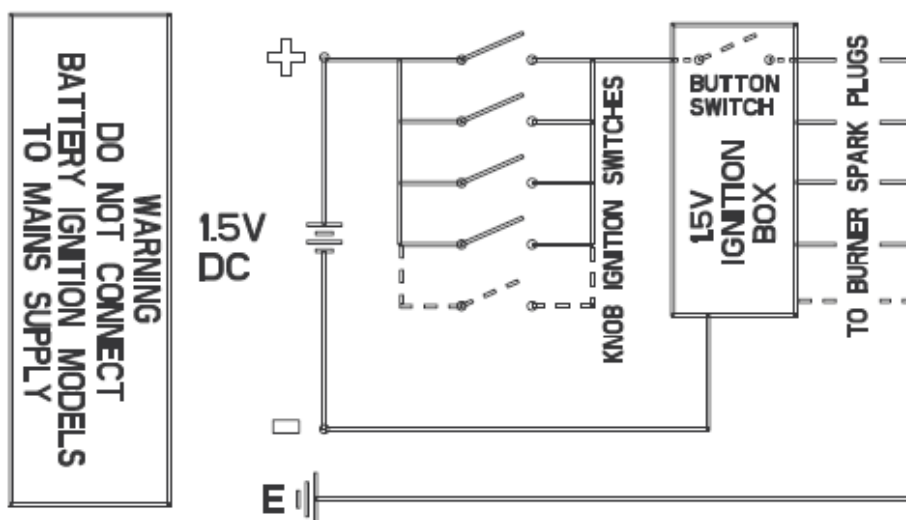
9. One by one, turn the knobs to minimum and screw in the bypass screw (accessible when the knob is removed) until a small stable flame results. Turn the knob to maximum and then back to minimum to ensure that the correct minimum flame is maintained.
10. Attach the LPG sticker to the cooker, near the gas supply inlet. Cover the Natural Gas label that is factory fitted.



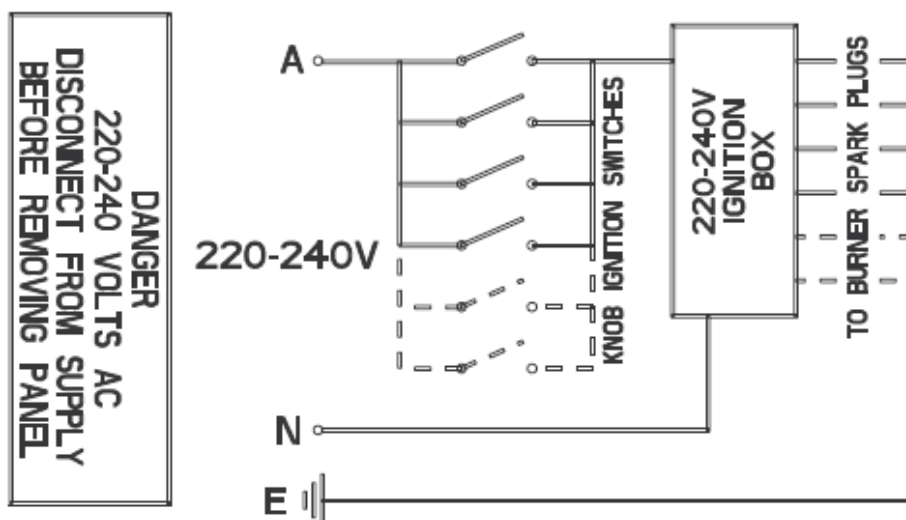
Kit Part N° ES6013		
PT N°	DESCRIPTION	QTY
0131 002 100	NIPPLE INJECTOR LP/NG 1.0 MM	1
0131 002 135	NIPPLE INJECTOR SEMI R NG 1.35 MM	2
0131 002 406	NIPPLE INJECTOR FISH NG 1.45 MM	1
0131 002 393	NIPPLE INJECTOR RAPID NG 1.60 MM	2
0131 002 403	NIPPLE INJECTOR WOK NG 1.75 MM	1
0131 001 148	NIPPLE INJECTOR AUX LP 0.55 MM	1
0131 001 149	NIPPLE INJECTOR SEMI R LP 0.70 MM	2
0131 001 186	NIPPLE INJECTOR RAPID LP 0.90 MM	2
0294 001 032	REGULATOR GAS NG INTEG TEST PT	1
0296 004 103	STICKER GAS TYPE LPG	1
0296 004 100	STICKER GAS TYPE NG	1
ES6012	INSTRUCTION SHEET	1

Burner Type	Natural Gas (Nominal test point pressure: 1.00kPa)	LPG (Nominal test point pressure: 2.60kPa)
Small	1.00	0.55
Medium	1.35	0.70
Fish	1.45	0.78
Large	1.60	0.90
Wok	1.75	1.00

1.5V BATTERY MODELS



220-240V MODELS

**WARNING**

IT IS ILLEGAL FOR PERSONS OTHER THAN LICENSED ELECTRICAL MECHANICS OR PERSONS AUTHORISED BY LEGISLATION TO WORK ON THE FIXED WIRING OF ANY ELECTRICAL INSTALLATION. PENALTIES FOR CONVICTION ARE SEVERE.

IMPORTANT SAFETY NOTICE

This diagram has been prepared for use by electrically qualified service technicians. Electrolux cannot be held responsible for the interpretation of its service publications nor for any injury or damage that may occur in connection with their use.